

OUR MISSION

To Protect Your Critical Environment

Critical environment:

1. Areas with critical impact to your business or assets should any fire outbreak occur

OR

2. Areas that are vulnerable to fire

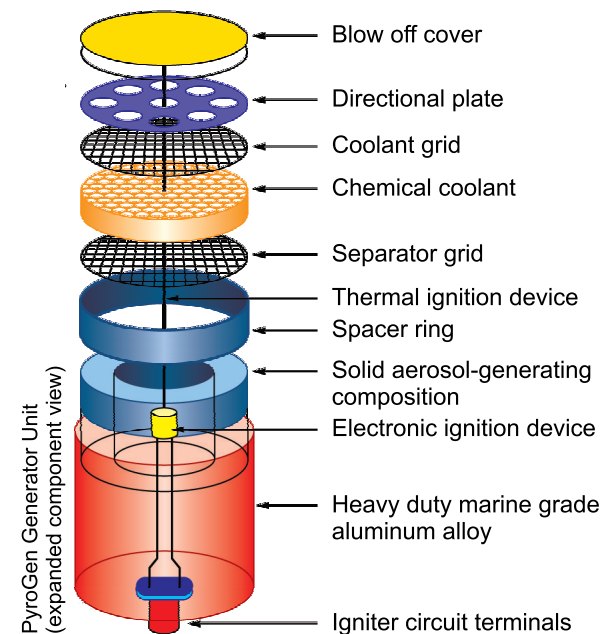
What steps have you taken to mitigate such risks posed by fire?

PyroGen... Your Solution.

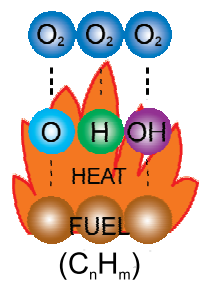
How PyroGen Works

PyroGen is an aerosol fire-extinguishing agent. The principle of PyroGen operation is unique - special solid formulation within a non-pressurized canister, when electrically or thermally activated, generates an aerosol exhibiting excellent fire extinguishing characteristics. The aerosol consists of a suspension of micron sized particles in a mixture of naturally occurring gases comprising mainly of Nitrogen.

Upon activation, the aerosol propels itself rapidly into the protected area, attacking the fire both chemically and physically, and almost instantaneously extinguishes it. Homogeneous distribution is achieved in a matter of seconds, while its long suspension time helps to prevent the fire from re-ignition.

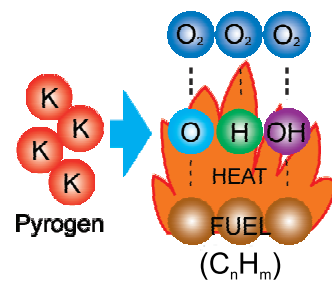


Fire Suppression Mechanism



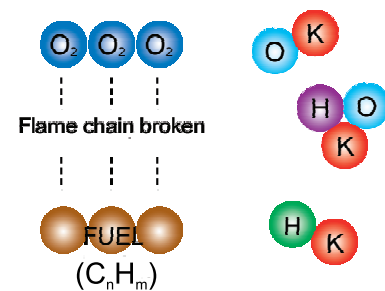
Stage 1

Fire propagates by chain reaction via "chain carriers" O, H & OH



Stage 2

PyroGen aerosol introduces potassium radicals (K) into the flame chain reaction



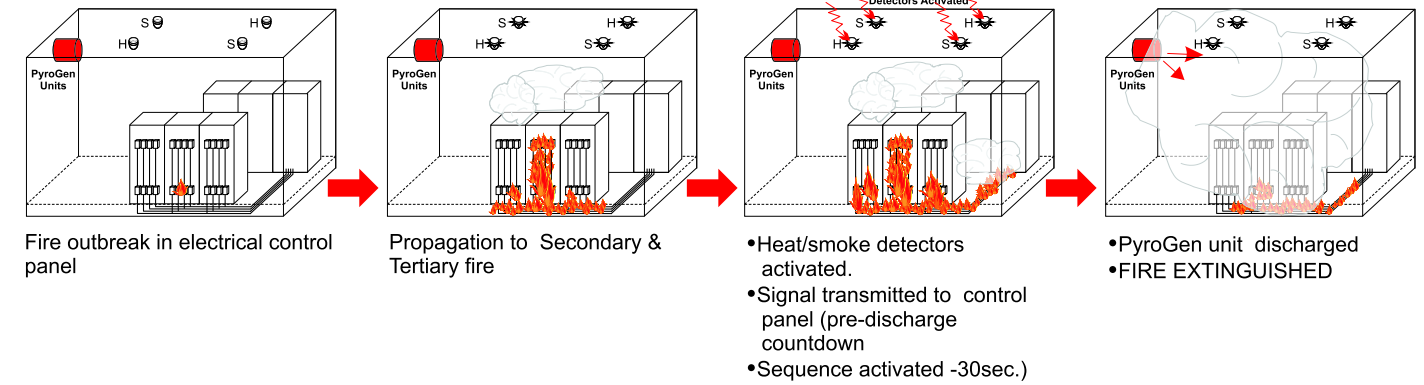
Stage 3

K radicals attach itself to O, H & OH and remove them from the flame chain reaction without depleting oxygen. Thus extinguishing the fire chemically

We Protect in Two Ways

1. PyroGen Total Flooding System (TFS)

TYPICAL SCENARIO



PyroGen™ Total Flooding Systems (TFS) are developed for protection of sealed enclosures.

Areas protected include:

- cargo compartments
- data rooms
- electrical substations
- cable tunnels
- generator rooms
- intelligent buildings
- laboratories
- machinery spaces
- raised-floors
- telecommunication cabins



Data Room



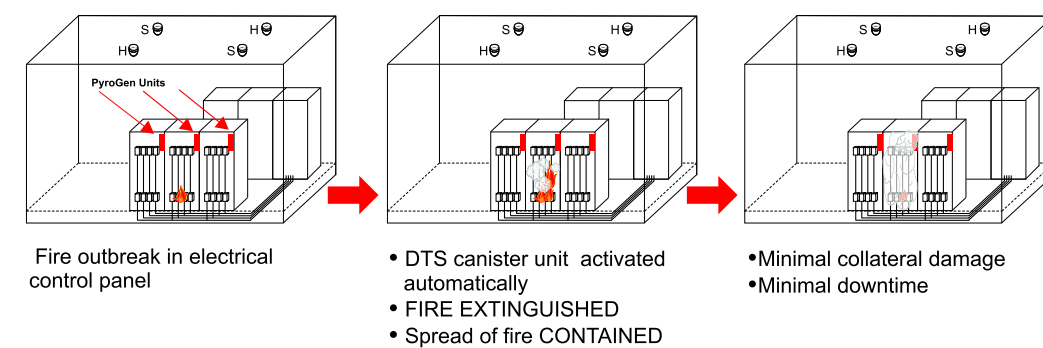
Telecommunications Cabin



33KV Sub-Station

2. PyroGen Direct-to-Source System (DTS)

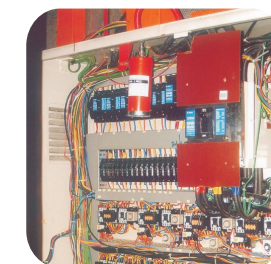
TYPICAL SCENARIO



The PyroGen™ Direct-To-Source (DTS) Fire Protection System is the latest innovation in the fight against the threat of fire, specifically developed for targeting/ extinguishing fire at its source.

Areas protected include:

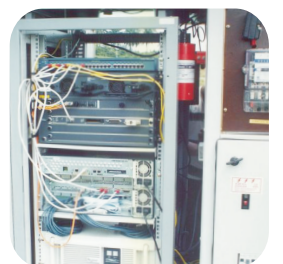
- CNC machines
- computer server racks
- distribution boards
- LV & HV switch gear panels
- electrical control cabinets
- engine compartments
- machinery compartments
- metering panels
- mining and earthmoving equipments
- TNB feeder pillars



Electrical Cabinet



Server Rack



Telecommunication Equipment Cabinet

